

Drugs and Nutrition: Marijuana

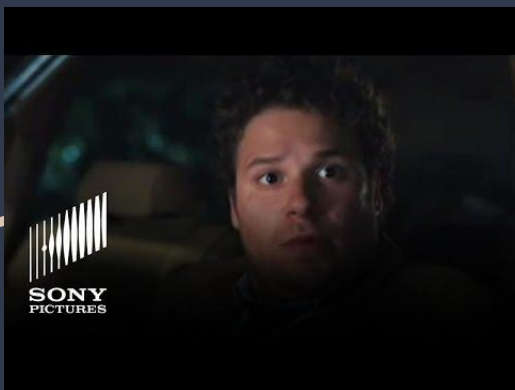
Elizabeth Williams
Jeff Willoughby



Drug classification and facts

- Considered a schedule 1 narcotic
 - substances, or chemicals are defined as drugs with no currently accepted medical use and a high potential for abuse
 - Which makes research in the U.S. difficult
 - Despite 30 states approving of medical marijuana and 8 states approving recreational use
- The plant contains THC which is the principal psychoactive constituent of cannabis
- Methods of consumption
 - smoke/vapor inhalation
 - Ingestion
 - Topical ointments
- In 2002 the approval rating for marijuana was at 34% in 2017 the percentage has risen to 64% (per Gallop)

Marijuana in media



- Illicit drug use is most common in movies than any other type of media
 - One study showed that drug use occurred 22% of movies
 - Almost half the time in these movies no consequences are shown
- Marijuana is most frequent “illicit” drug used
- Columbia university found that watching R-rated movies was associated with a sixfold increase of risk of trying Marijuana in teens

The American Academy of Pediatrics found that...

- Young people view 1000-2000 alcohol advertisements annually.
- All of the top 15 teen television programs aired alcohol advertisements
- “Teen-oriented magazines contain 48% more advertising for beer, 20% more advertising for hard liquor, and 92% more advertising for sweet alcoholic drinks than do magazines aimed at adults of legal drinking age”
- Being so exposed to such advertisements causes children to grow up with a positive attitude towards drinking.
- The pharmaceutical industry spends 6 billion dollars a year on advertising.
- This causes children to grow up with the idea that there is a pill to fix everything.



Theories



- Marijuana causes brain damage
 - Research suggests: Cannabis use has a greater impact on younger, developing brains than older brains.
- Marijuana is a gateway drug
 - Research suggests: marijuana is not a gateway drug
- Marijuana has efficacy when dealing with particular cancers, diseases, and disabilities

So, is marijuana really a gateway drug?

Especially, considering the targeted advertisements of alcohol and prescription drugs?
Some say yes, some say no. What we do know though is...

- 65% of people's first drug experience is with alcohol
- 80% of people addicted to heroin started out misusing prescription drugs
- Often beginning while they are still technically children.
- This notion that marijuana is a gateway drug stems from it's prohibition



Medical Use in Children

- Cancer (Vice's Weediquette)



- Autism



- Epilepsy



Discussion questions



- What's the earliest age you noticed marijuana in media? What effect did it cause if any?
- If Marijuana became legal for medical and recreational use throughout the entire United states how would this affect children and teens?
- When should Marijuana be used, if ever, by children, teens, and adults?

References:

- Strasburger, Victor C. "Policy Statement--children, Adolescents, Substance Abuse, and the Media." *Pediatrics* 126.4 (2010): 791-9. Web.
 - Singer, Dorothy G., and Jerome L. Singer. *Handbook of Children and the Media*. Sage Publications, 2012.
- 